

E-LEAD ELECTRONIC CO., LTD.



- The information contained in this document has been prepared by E-Lead Electronic Co. Ltd. (the "Company") and the content information does not denote nor imply in the representation, nor any warranties as to, or in relation to, reliability, accuracy, completeness of the information or any revision thereof. The information is made available to public as to the nearest dynamic changes at the time of publication created, the liability therefore is expressly disclaimed. Accordingly, neither the Company nor any of its shareholders, agents, or representatives take any responsibility for, or will accept any liability (whether errors of omissions or negligence) for any of the content information or the information contained herein to howsoever arising, from the use of this Presentation.
- This Presentation includes certain statements that may be deemed “forward-looking statements” and expectation with vision. All statements and outlook in this discussion address future activities, events or developments that the Company expects are based on the uncontrollable pre-conditions. Thus, any interested party or its advisers shall understand factors that could cause actual results to differ materially from those in forward-looking statements.

E-LEAD Taiwan

**Headquarters
R&D Center**

**Changhua Site
Factory**

**Chuan-Hsin Site
Optical Mirror**

R&D:
ID,ME, EE-1, EE-2

Assembly line x 10

Mirror line x 4

SMT line x 2
Assembly line x 8

- Flat Mirror
- Convex Mirror
- Free Form Mirror



DA, Rear Seat
Entertainment, Around
View Monitoring System
(AVM), Rear Camera,
Blind Spot
Monitoring(BSM),
Car Wireless Charger

Car Accessories

Optical related
merchandises

E-LEAD Jiangsu

Suzhou

R&D
SMT line X 2
HUD Circle Assembly
line x 2



WHUD / ARHUD

E-LEAD Thailand

Thailand

SMT line X 2
Assembly line x 12



DA, Rear Seat Entertainment,
Around View Monitoring
System (AVM), Rear Camera,
WHUD / ARHUD, Blind Spot
Monitoring(BSM),
Car Wireless Charger, DVR, E-
Mirror

E-LEAD India

Project-Based Office

Sales, FAE, ME, EE, PE



WHUD / ARHUD, E-Mirror,
Around View Monitoring
System (AVM), Car Wireless
Charger, DVR

Tong Yah Electronic

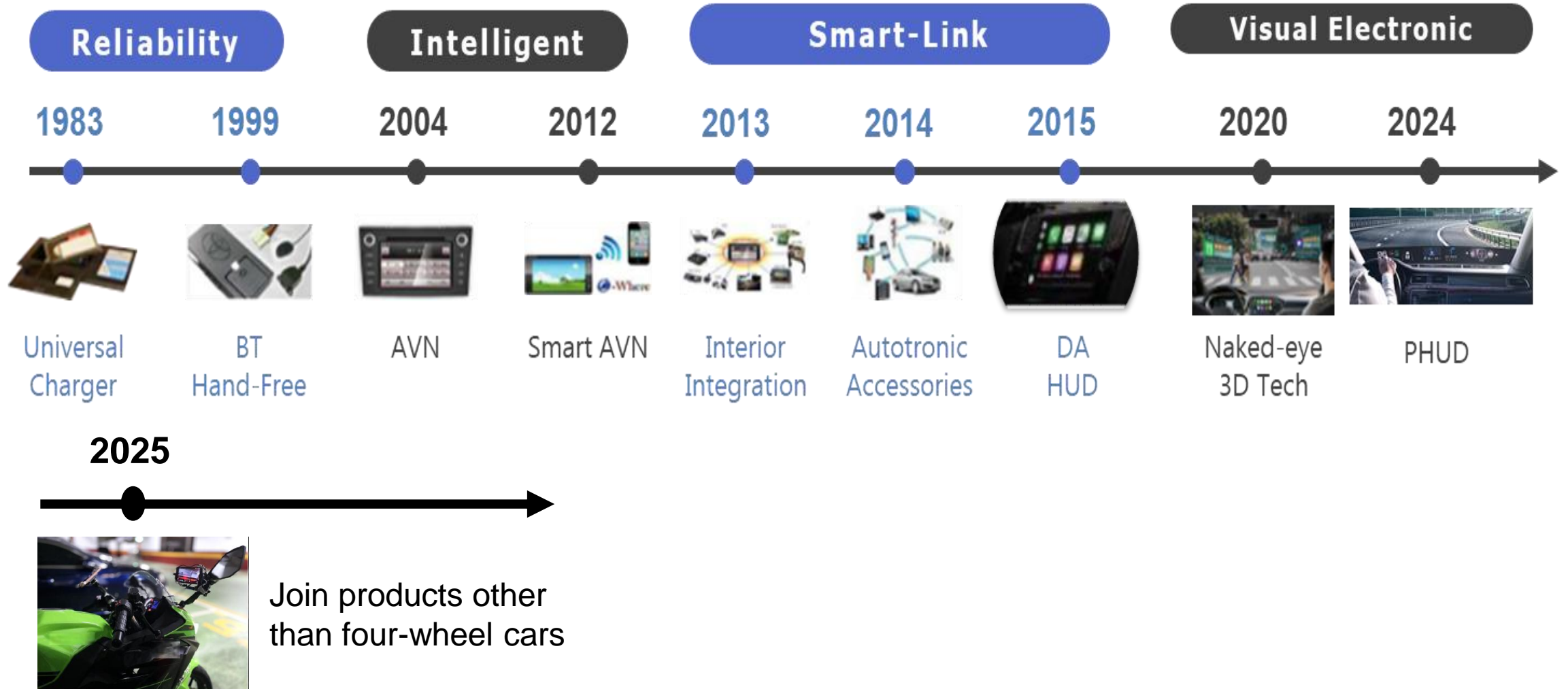
Tainan

R&D:
ID,ME, EE

Electronics Manufacturer
Mechanical Manufacturer



Digital dashboard, Lights, Heated
grips, Electronic instruments,
UAV accessories, Special vehicle
electrical components





- ▶ **Establish in 1981**
- ▶ **Specialized in 2 Wheel Scooter, Motorcycle and Off-road Vehicles**
- ▶ **Product Range:**
 - Electronic Gauge Product
 - LED Product
 - Heated Product
 - Electronic Parts
- ▶ **Special Strengths:**

Abundant experiences in developing and manufacturing for 2 wheel industry with Self-owned molding and injection plants so as to provide a more flexible delivery lead-time.



- ▶ **Establish in 1983**
- ▶ **Specialized in 4 Wheel and commercial vehicles**
- ▶ **Product Range:**
 - Head Up Display
 - Infotainment Head Unit
 - Rear Seat Entertainment
 - Other Autotronic Parts
- ▶ **Special Strengths:**

Qualified Tier1 supplier for most of global car OEMs with Taiwan, Thailand & China production bases. Robust QMS, innovative and flexible technological capability

E-LEAD acquires a 100% stake in KOSO

- Mainland China Market **(TO GLOBAL MARKET)**
WHUD / 2D ARHUD / 3D Spatial Vision HUD / VPA / PHUD
- Taiwan, Southeast Asia + India Market **(TO GLOBAL MARKET)**
INFOTAINMENT / ADAS / WHUD / 2D ARHUD / ACCESSORIES /
Two-wheeler & Special Purpose Vehicle Electronics and Accessories
- Europe & United States Market **(TO GLOBAL MARKET)**
WHUD / 2D ARHUD / 3D Spatial Vision HUD / PHUD / ACCESSORIES /
Two-wheeler & Special Purpose Vehicle Electronics and Accessories





HUD / Digital IC



Infotainment / HMI



ADAS



Accessories



DASHBOARD



HEATER



LIGHTING



ELECTRICAL ACCESSORIES



2 Wheeler Appearance



Transmission System



Engine System



Carburetor Starter & Fans

Motorcycle/Scooter & Special Purpose Vehicle Electronics

in Alphabetical Order

Key OEM Customers in the Motorcycle Segment



in the Agricultural & Construction Machinery Segment



Dashboard_R&D Technology Roadmap



OEM Clients - LCD Product Portfolio (LCD)



PGO UR1
Electric Vehicle LCD Instrument Cluster



KTM TF 250-E
LCD Instrument Cluster



Beta Moto
Off-Road Electric Vehicle LCD Instrument Cluster



Gogoro VIVA
LCD Instrument Cluster



Triumph EX-03



Ducati V21K
Off-Road Electric Vehicle LCD Instrument Cluster

量產中，
預計2026年上市！

In mass production, scheduled
for market launch in 2026.

OEM Clients - Digital Dashboard Product Portfolio (TFT LCD)



Kawasaki Z900



Belassi Jet ski



Fantic Caballero 700



TAKEUCHI Excavators



Argo



Gaia

PLUG & PLAY



UNLIMIT



CLASSIC



RACE



Product Introduction - 8" Smart Dashboard



8" Color Touchscreen Feature Summary:

- USB Port / Bootloader
- Digital and Analog Camera Inputs
- IP67 Protection Rating
(Touchscreen remains functional even when exposed to water or dust)
- Gravity Sensor

Lighting_R&D Technology Roadmap



OEM Clients - Lighting Product Portfolio



MV AGUSTA F3
LED Head Lamp



MV AGUSTA Lucky Explorer
LED Tail Light



MV AGUSTA Super Veloce
LED Tail Light



KTM A637
LED Front Indicator Light Set



KTM A637
LED Tail Light Set



KTM A674
LED Front Position Light

OEM Clients - Lighting Product Portfolio



DUCATI V220
LED Front Indicator Light



DUCATI 2102
LED Front Indicator Light



DUCATI V21E
LED Rear Fog Light



BRP Signature light
LED Front Position Light



TRIUMPH Street Triple 2023
LED Tail Light

Head Lamp



Auxiliary Lighting



Tail Lights



Indicator Light



Future Product Roadmap - Bending Light

- Adaptive Matrix LED Head Lamp
- LED Matrix Driver Module
- MCU Control Unit
- Beam Pattern Switching Algorithm
- Thermal Design and Modular Packaging



Heater _R&D Technology Roadmap



OEM Clients - Heated Product Portfolio



KYMCO AK550
Heated Grips



BRP Jet Ski



INDIAN FTR



BRP Spyder

PLUG & PLAY



Integrated Heated Grips



Heated Grips



Removable Heater



Future product roadmap - Heating application modules

- Heated seat pads for wheelchairs and mobility scooters
- Heated grips and steering wheels for agricultural machinery (e.g., lawnmowers and snow blowers)



Electronics _R&D Technology Roadmap



OEM Clients - Electronics Product Portfolio



TRIUMPH USB



Triumph split-type USB



Gogoro
smart phone wireless charging mount



KTM Type C USB



Kawasaki PCU

Product introduction - PCU & PCU II

- Connect smartphones and dashboards through PCU (Bluetooth) & PCU II (Bluetooth + Wi-Fi) controllers to share information with each other.



Product introduction - Handlebar Switches

**Triumph off
road motorcycle
handlebar switch**

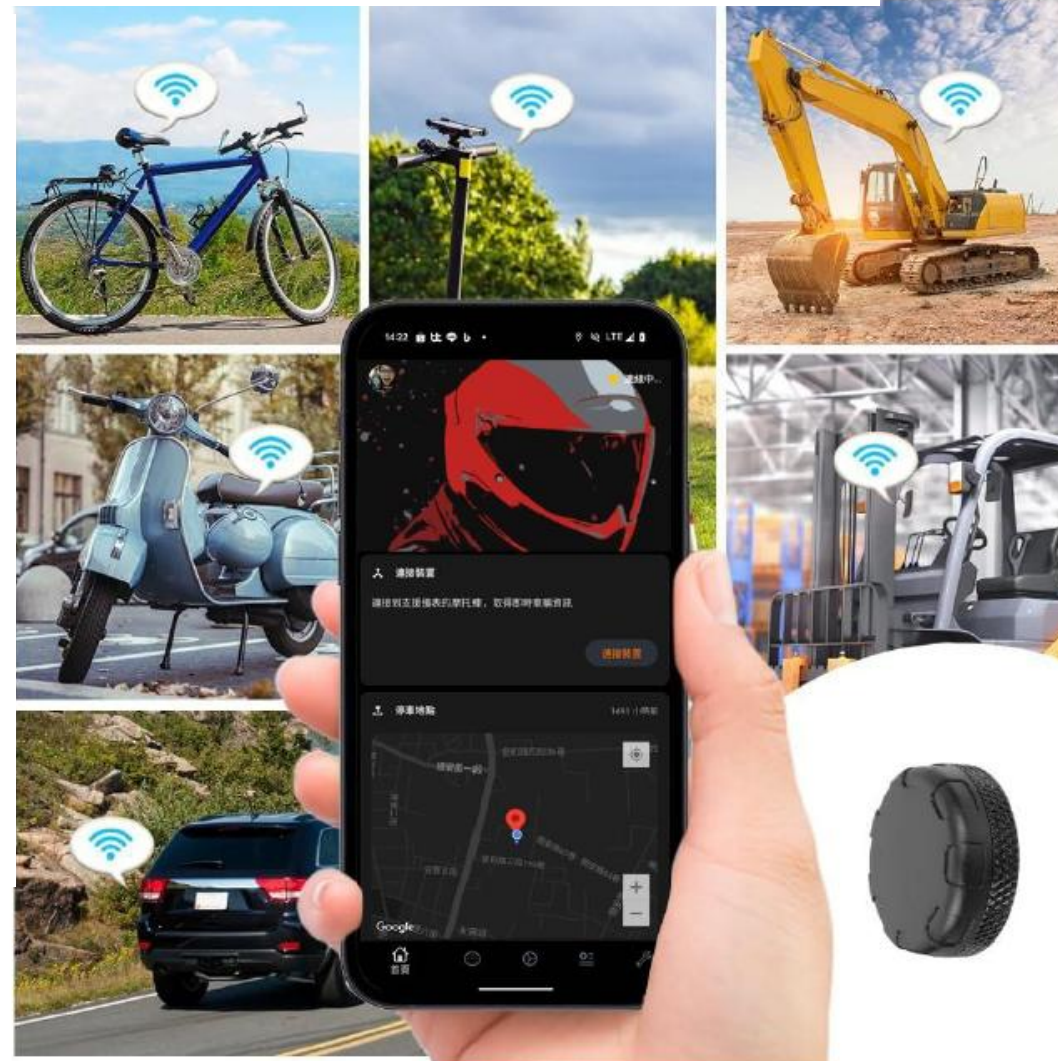


**Kubota
electronic control
lever**



Future product roadmap - Anti-theft LTE + APP

- Location tracking
- Parking security
- Movement alarm
- Vehicle finder mode
- Integration of KOSO dashboard and APP
- High-end bicycles, modified vehicles, heavy motorcycles, construction and agricultural machinery



Future product roadmap - System Integration

- Radar blind spot detection
- Camera driving recording
- Dashboard integrated display



Motorcycle/Scooter & Special Purpose Vehicle Mechanical

Major customers (Mechanism Manufacturer)



KOSO TAIWAN
KOSO THAILAND
KOSO PHILIPPEN
KOSO INDONESIA
KOSO NORTH AMERICA



Major product introduction - Style



Sprint handlebar clamp



Dual cable throttle housing



Dragon bone lever



Light guide lever



Rearview mirror



Dragon pattern grips



Gulfstream dual-color grips



Hurricane dual-color grips



Aurora dual-color grips



Wave dual-color grips



Gale dual-color grips



Chassis reinforcement bar

Major product introduction - Style



Sprint windscreen



Aero small windscreen



Front fender



Engine aero front cover



Aero radiator guard



Aero air filter cover



Lightweight aero transmission cover



Exhaust heat shield



Rear inner fender



Rear fender set (including light)

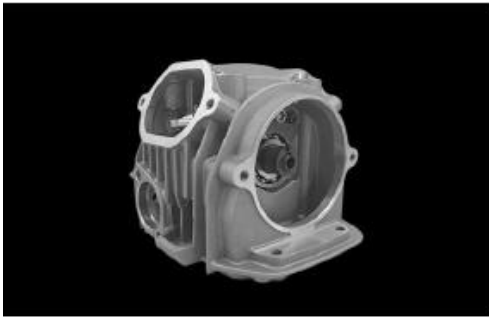


Rear mini fender



X1 aero license plate frame

Major product introduction - Engine system, Transmission system



Cylinder head



Cylinder



Spark plug cap



Drivetrain kit



Clutch kit



Torque driver



Wave performance air filter



Carburetor



Throttle body



Intake manifold



Lightweight fan

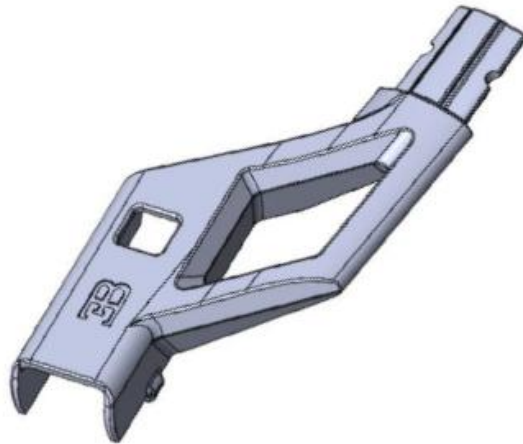
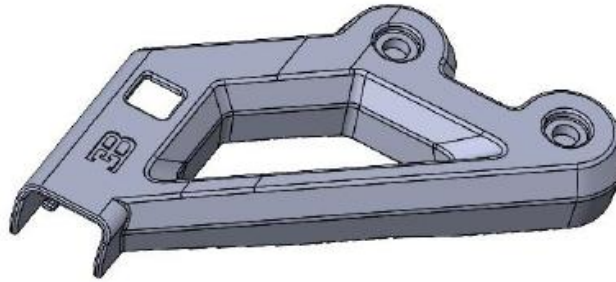


Magneto rotor

Vintage motorcycle parts - Puch Maxi



Cross-industry products - Bugatti wiper components



Cross-industry product - Cylinder for firefighting engines



Future product plan - Fuel propulsion system



Future product plan - UAV engine carburetor & starter

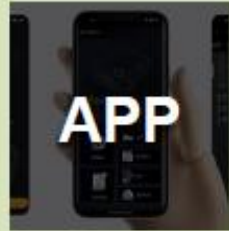


Future product plan - UAV UAS



Future product plan - Variable frequency electronic fan





APP



儀表

Dashboard



鏡頭

Camera



盲點偵測

Blind spot detection



防盜

Anti-theft



Key Less



感測器

Sensor



通訊連線

Communication connection



無線傳輸

Wireless transmission



按鍵開關

Handlebar switch



操作桿

Control lever



頭燈

Head lamp



方向燈

Indicator light



加熱握把

Heated grips



加熱手套

Heated gloves



尾燈

Tail lights



後視鏡

Rearview mirror



閃爍器

Flasher



USB 充電

USB charger



手機架

Phone mount



加熱坐墊

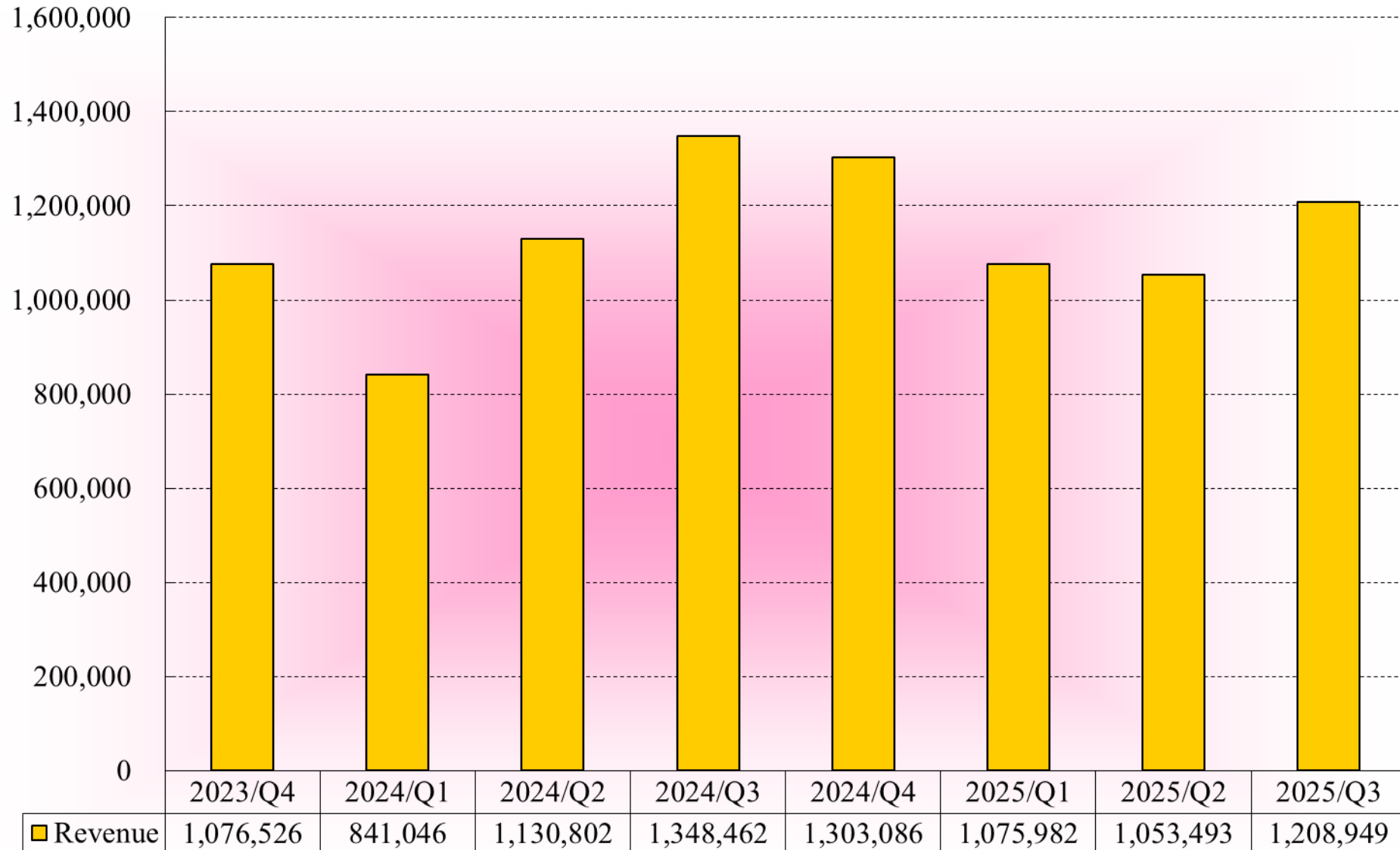
Heated seat



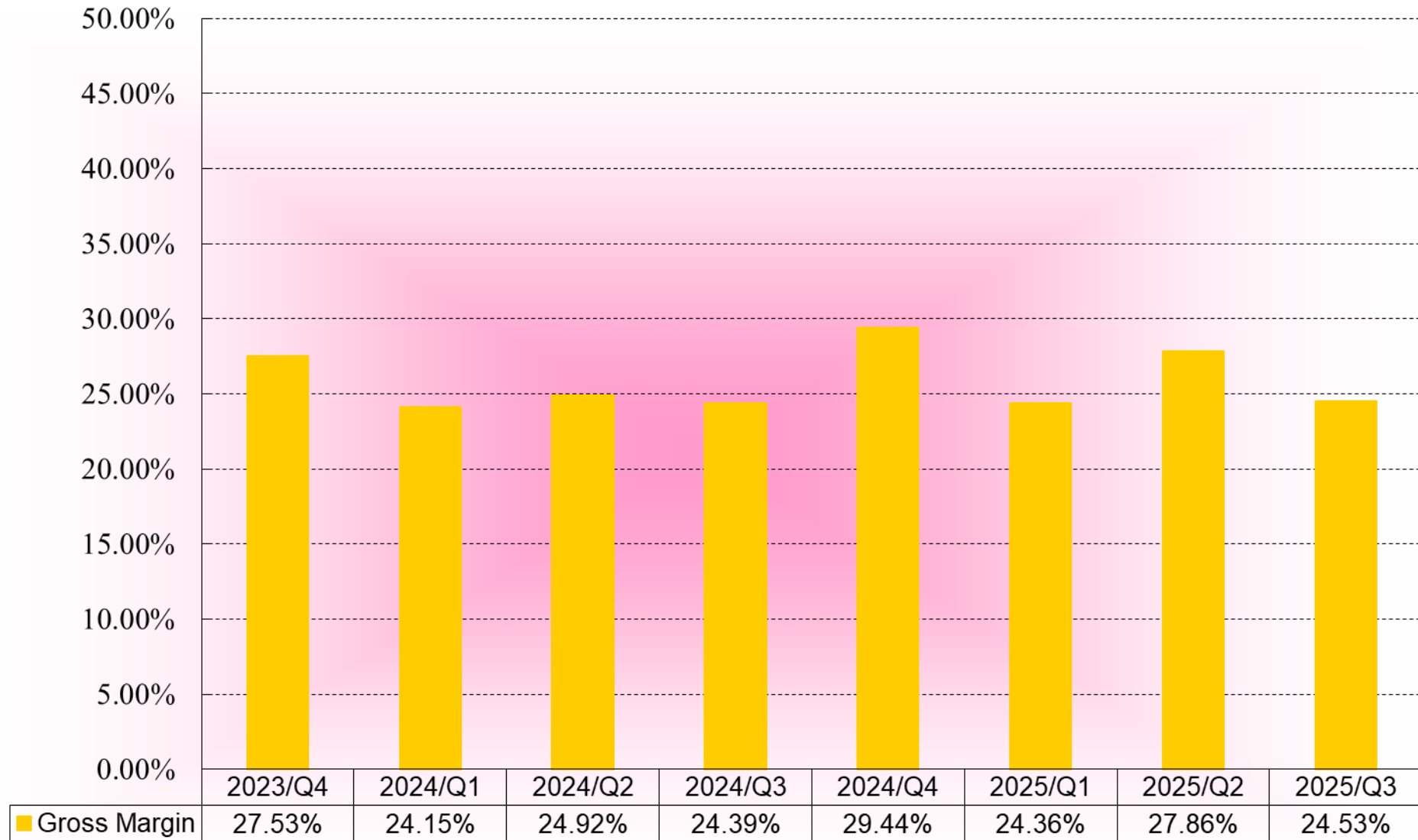
加熱方向盤

Heated steering wheel

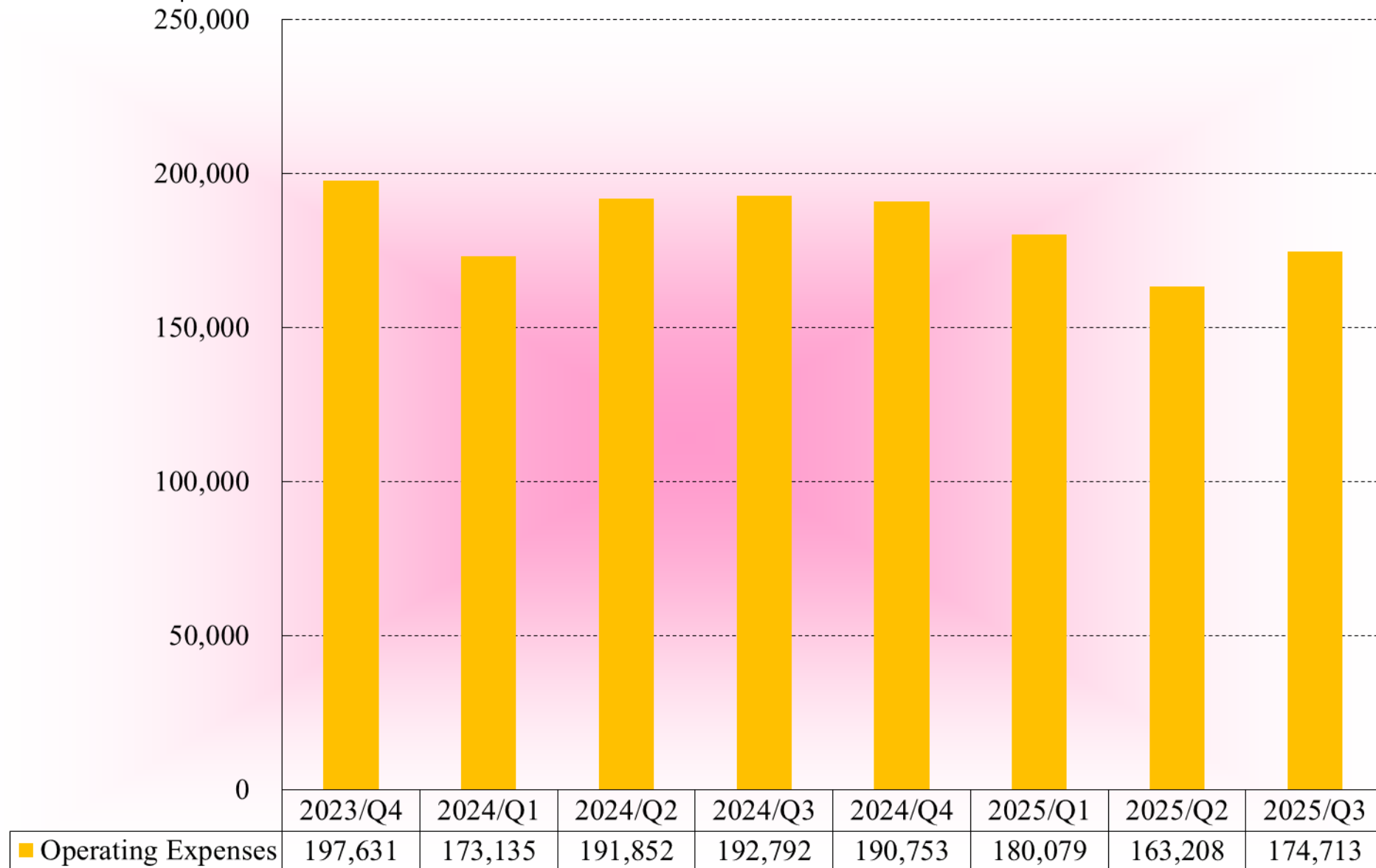
UNIT: NT\$ thousand



Financial Status – Gross Margin



UNIT: NT\$ thousand

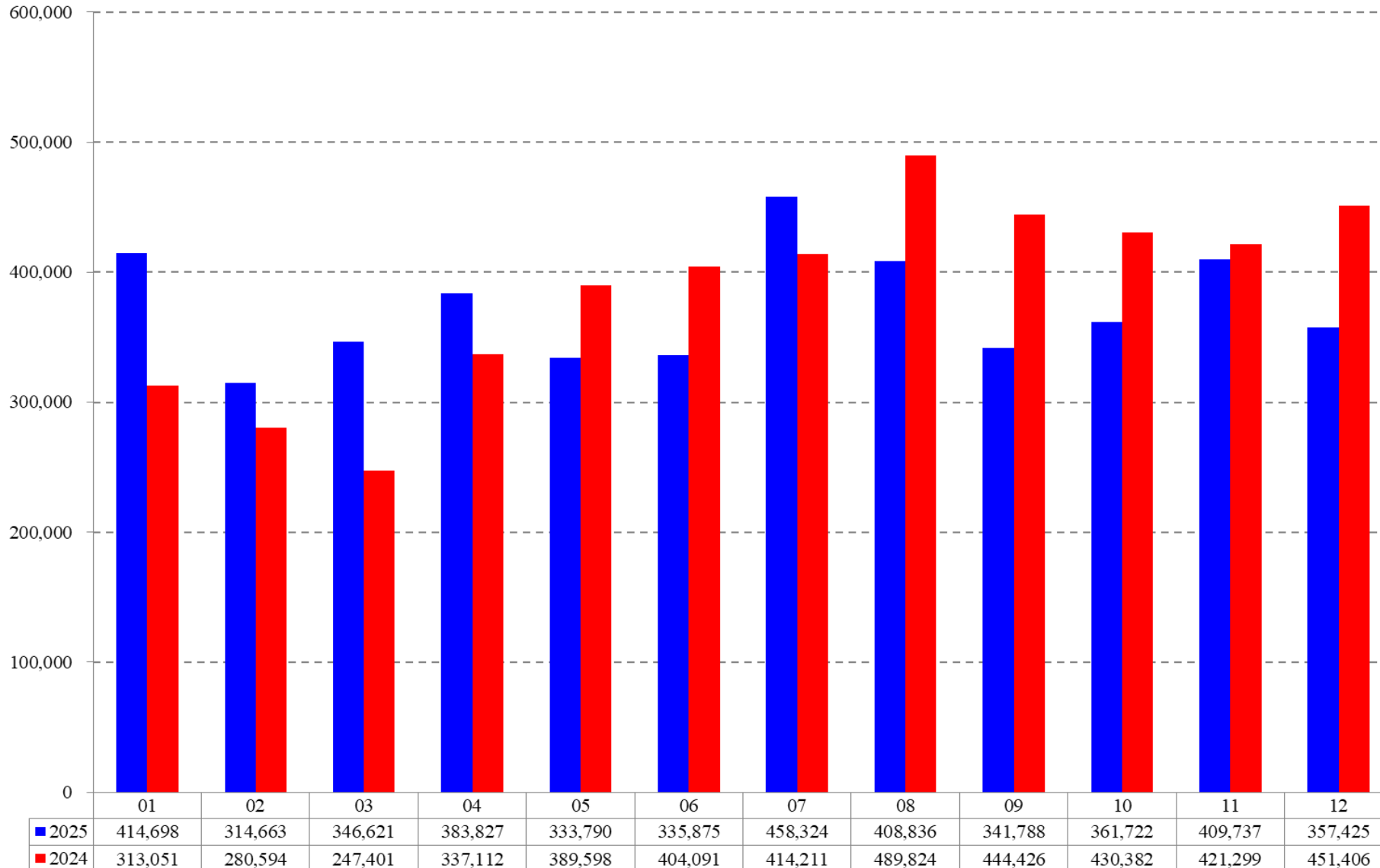


UNIT: NT\$

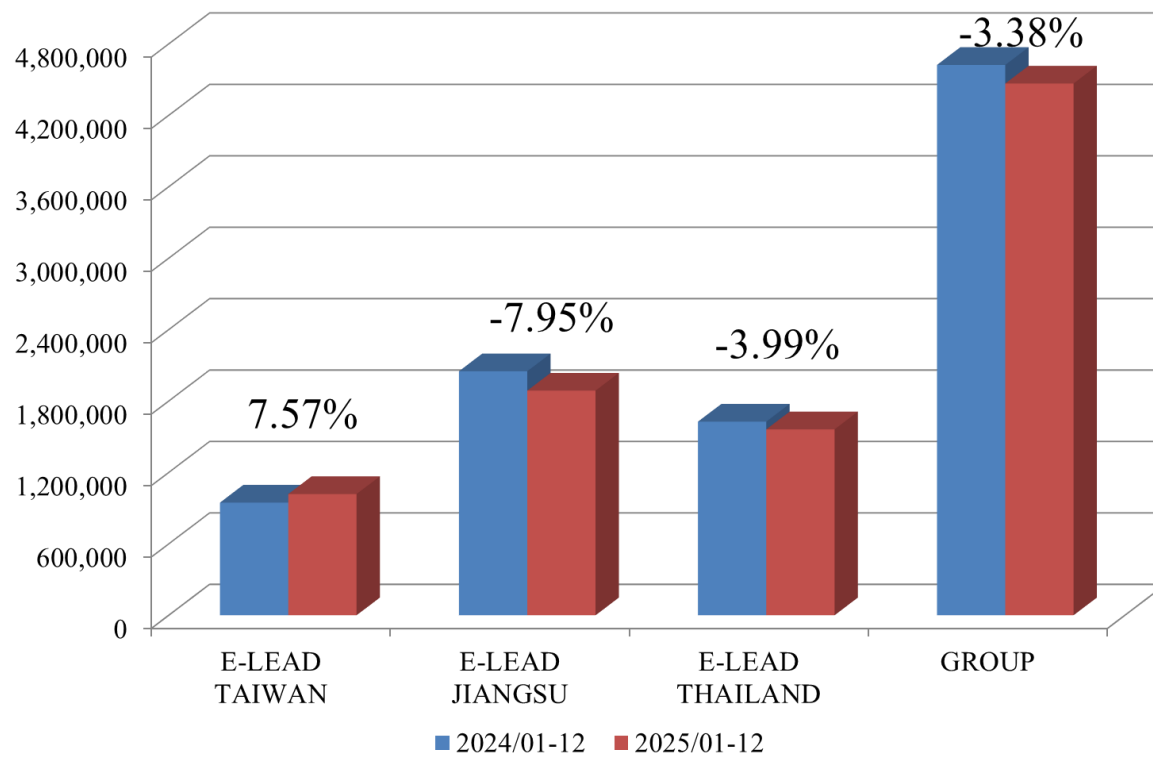


Revenue

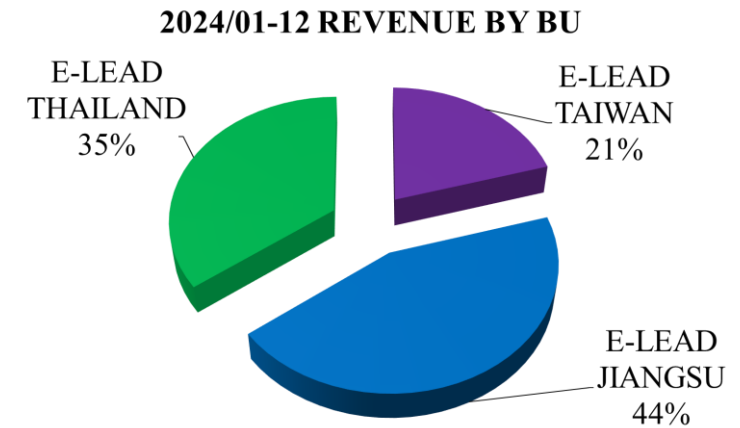
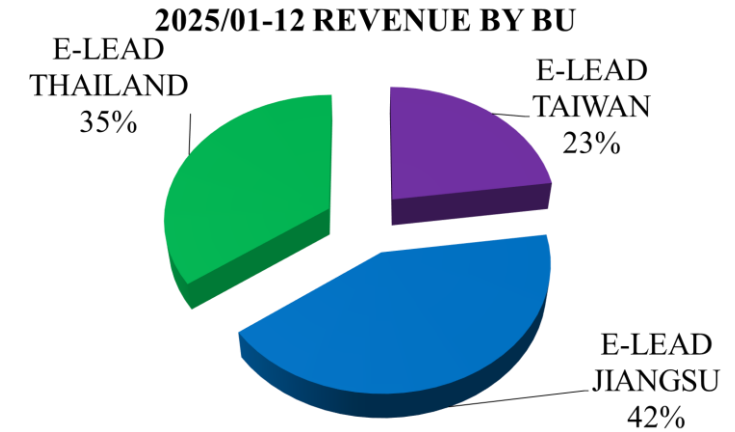
UNIT: NT\$ thousand



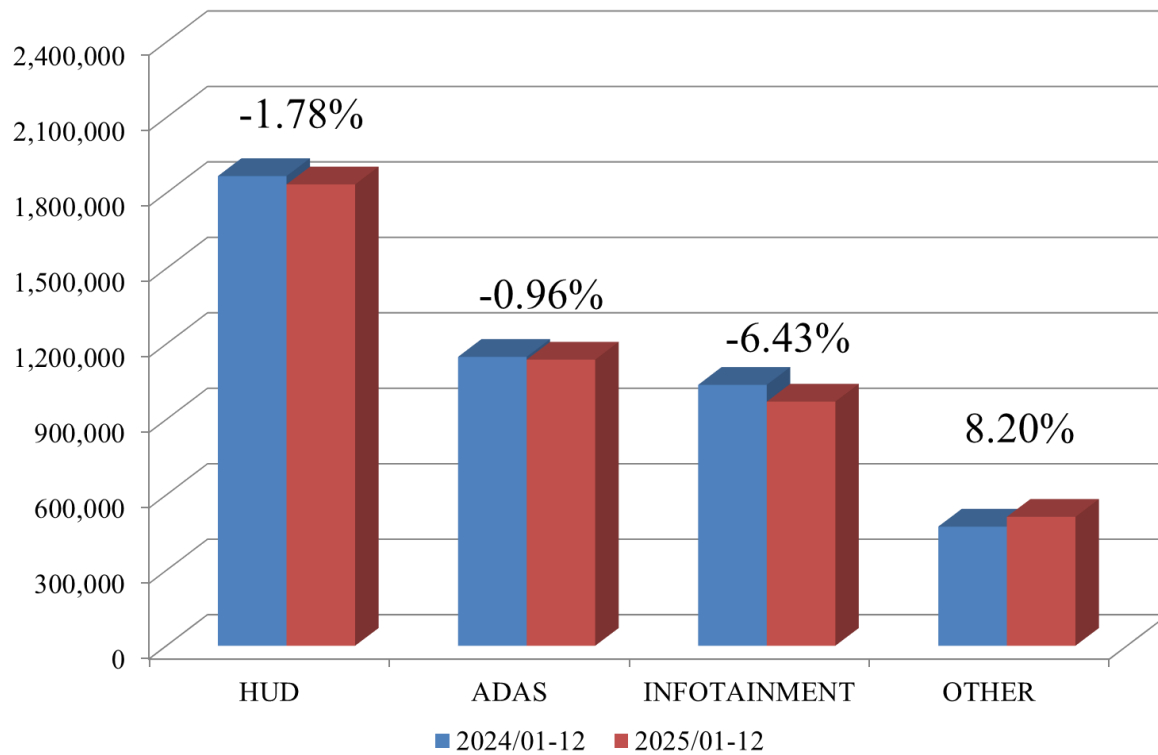
TREND



RATIO

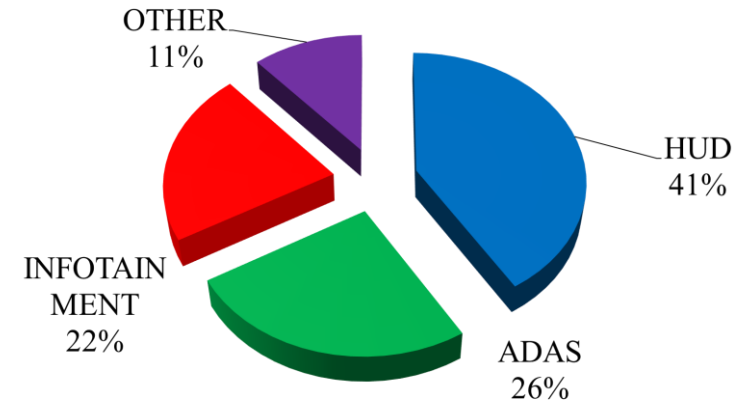


TREND

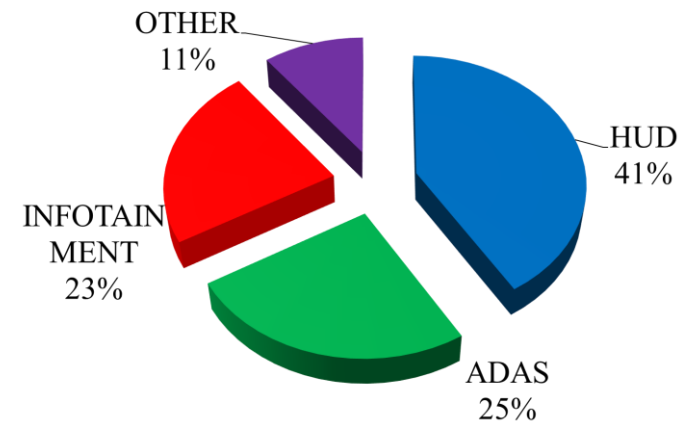


RATIO

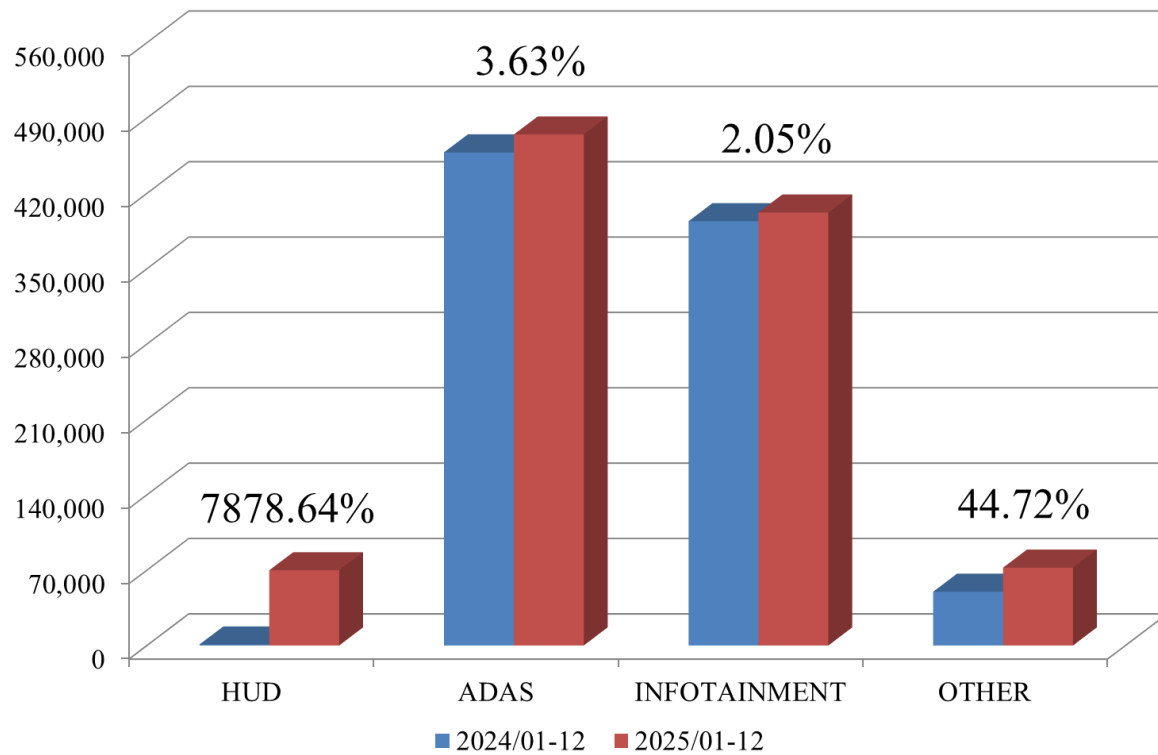
2025/01-12 E-LEAD GROUP REVENUE BY PRODUCT



2024/01-12 E-LEAD GROUP REVENUE BY PRODUCT

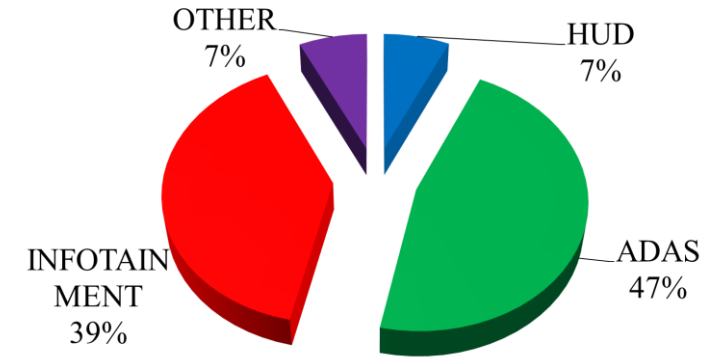


TREND

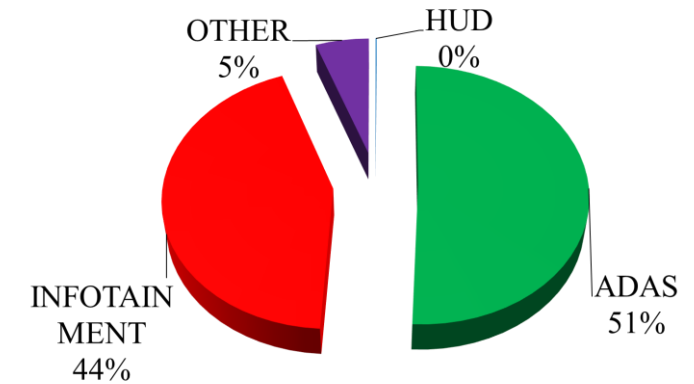


RATIO

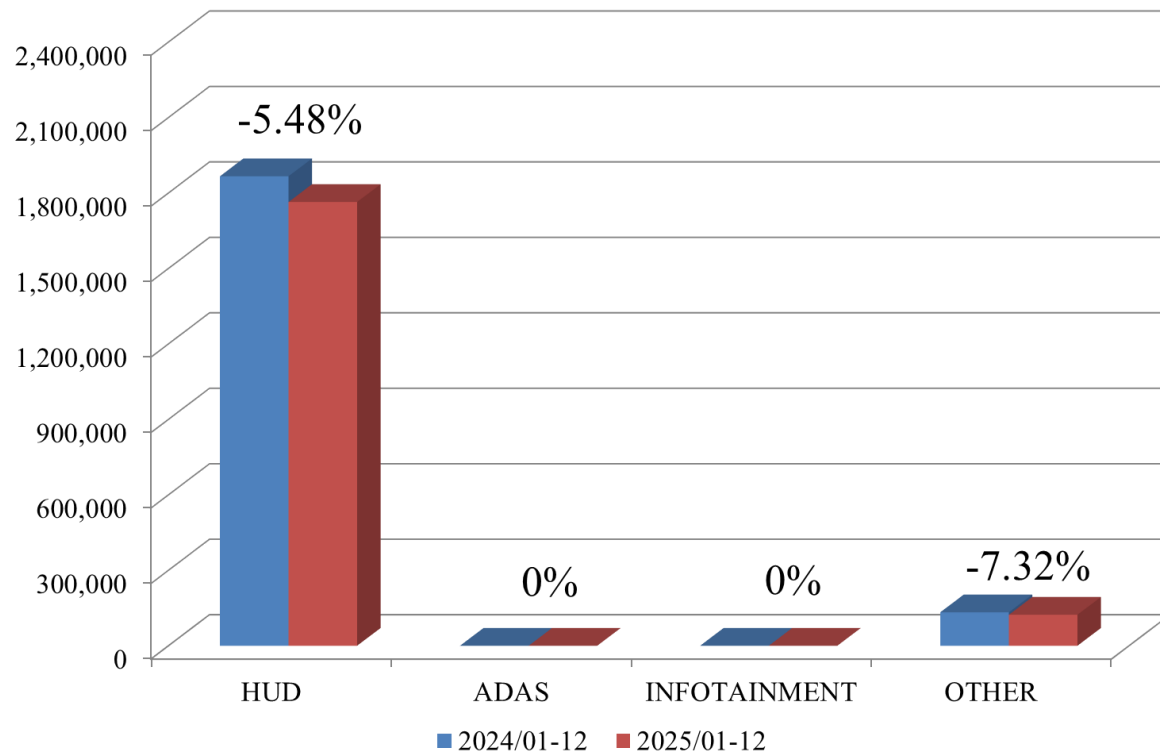
2025/01-12 E-LEAD TAIWAN REVENUE BY PRODUCT



2024/01-12 E-LEAD TAIWAN REVENUE BY PRODUCT

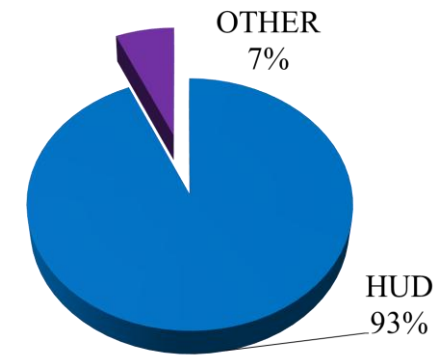


TREND

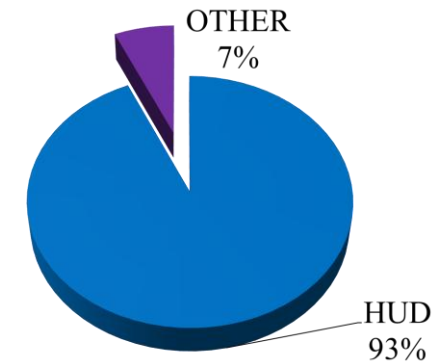


RATIO

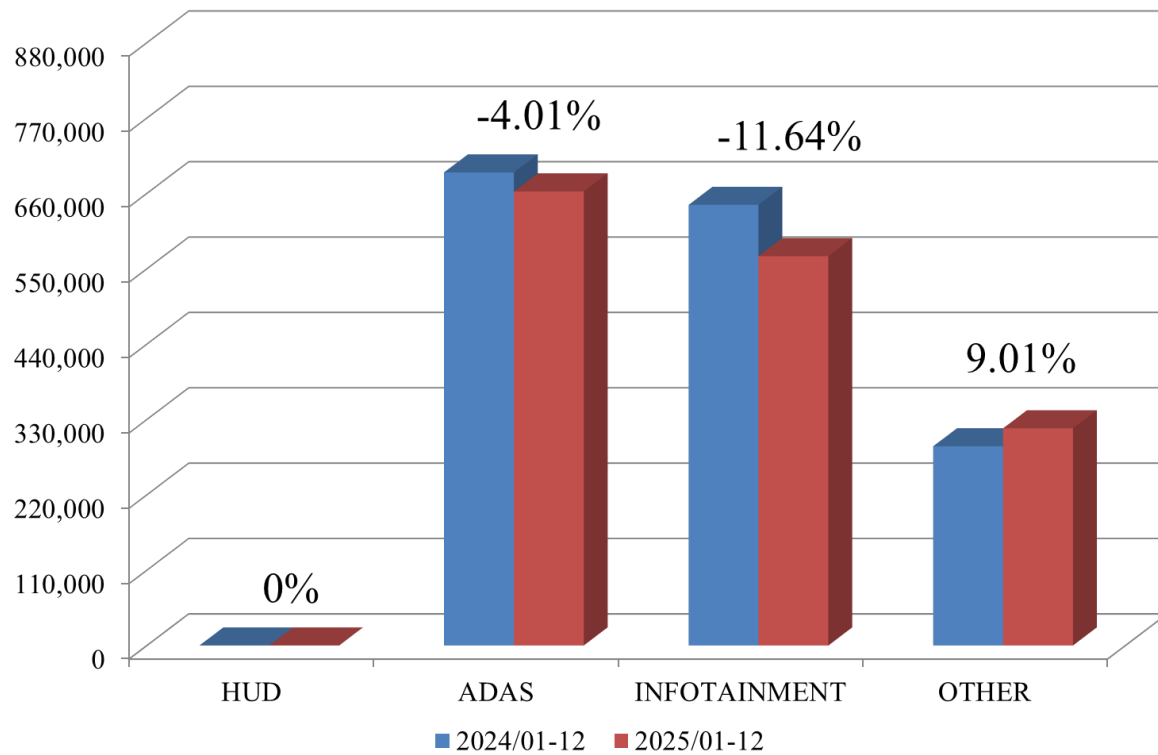
2025/01-12 E-LEAD JIANGSU REVENUE BY PRODUCT



2024/01-12 E-LEAD JIANGSU REVENUE BY PRODUCT

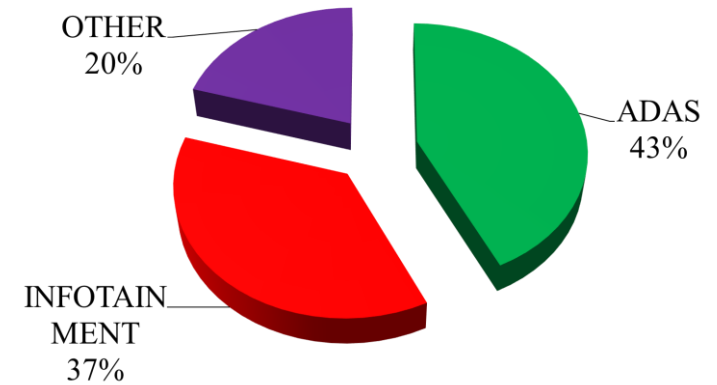


TREND

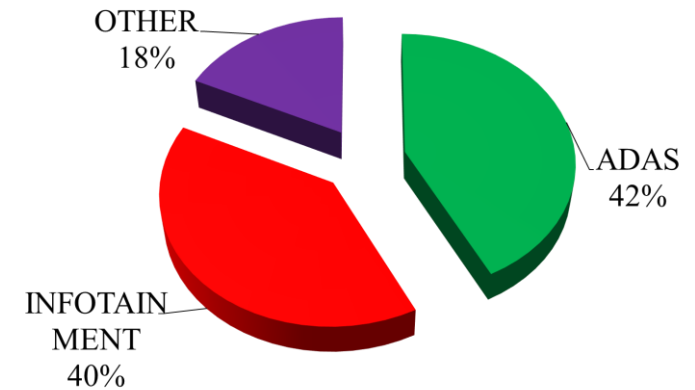


RATIO

2025/01-12 E-LEAD THAILAND REVENUE BY PRODUCT



2024/01-12 E-LEAD THAILAND REVENUE BY PRODUCT



Thank you



Q & A